



**India Meteorological Department
(Ministry of Earth Sciences)**

NATIONAL BULLETIN NO. 8 (BoB/04/2025)

TIME OF ISSUE: 1440 HOURS IST

DATED: 26.07.2025

FROM: INDIA METEOROLOGICAL DEPARTMENT (FAX NO. 24643965/24699216/24623220)

TO: CONTROL ROOM, NDM, MINISTRY OF HOME AFFAIRS (FAX.NO. 23093750)

CONTROL ROOM NDMA (FAX.NO. 26701729)

CABINET SECRETARIAT (FAX.NO.23012284, 23018638)

PS TO HON'BLE MINISTER FOR S & T AND EARTH SCIENCES (FAX NO.23316745)

SECRETARY, MOES (FAX NO. 24629777)

H.Q. (INTEGRATED DEFENCE STAFF AND CDS) (FAX NO. 23005137/23005147)

DIRECTOR GENERAL, DOORDARSHAN (23385843)

DIRECTOR GENERAL, AIR (23421105, 23421219)

PIB MOES (FAX NO. 23389042)

UNI (FAX NO. 23355841)

D.G. NATIONAL DISASTER RESPONSE FORCE (NDRF) (FAX NO. 26105912, 2436 3260)

DIRECTOR, PUNCTUALITY, INDIAN RAILWAYS (FAX NO. 23388503)

CHIEF SECRETARY, ODISHA (FAX NO. 0674-2536660)

CHIEF SECRETARY, WEST BENGAL (FAX NO. 033-22144328)

CHIEF SECRETARY, GOVT. OF BIHAR (FAX NO. 0612-2217085)

CHIEF SECRETARY, GOVT. OF JHARKHAND (FAX NO. 0651-2400255)

CHIEF SECRETARY, GOVT. OF CHHATTISGARH (FAX NO. 0771-2221206)

CHIEF SECRETARY, GOVT. OF MADHYA PRADESH (FAX NO. 0755-2551521)

CHIEF SECRETARY, GOVT. OF UTTAR PRADESH (FAX NO. 0522-2239283)

CHIEF SECRETARY, GOVT. OF MAHARASHTRA (FAX NO. 022-22028594)

CHIEF SECRETARY, GOVT. OF RAJASTHAN (FAX NO. 0141-2227114)

CHIEF SECRETARY, GOVT. OF GUJARAT (FAX NO. 079-23250305)

Subject: Depression over north Chhattisgarh and adjoining east Madhya Pradesh

The Depression over north Chhattisgarh and adjoining Jharkhand moved very fast nearly westwards with a speed of 47 kmph during past 6 hours and lay centred at 1130 hrs IST of today, the 26th July over north Chhattisgarh and adjoining east Madhya Pradesh, near Lat. 23.2°N and Long. 82.3°E, about 60 km northeast of Pendra Road (Chhattisgarh), 150 km east-southeast of Umaria (Madhya Pradesh), 210 km east-northeast of Mandla (Madhya Pradesh) and 240 km east of Jabalpur (Madhya Pradesh).

It is very likely to continue to move nearly westwards across Madhya Pradesh and weaken gradually into a well marked low pressure area by tomorrow, the 27th July, 2025.

Warnings:

(i) Rainfall Warning:

Jharkhand: Light to moderate rainfall at most places with **heavy to very heavy rainfall** at isolated places is very likely on 26th July.

Chhattisgarh: Light to moderate rainfall at most places with **heavy to very heavy rainfall** at isolated places over north Chhattisgarh on 26th and **Heavy rainfall** at isolated places is very likely on 27th & 28th July.

East Madhya Pradesh: Light to moderate rainfall at most places with **heavy to very heavy rainfall** at isolated places **is very likely** during 26th – 28th July with **extremely heavy rainfall (≥ 21 cm)** on 26th July.

West Madhya Pradesh: Light to moderate rainfall at most places with **heavy to very heavy rainfall** at isolated places **is very likely** during 26th – 28th July with **extremely heavy rainfall (≥ 21 cm)** on 26th & 27th July.

Odisha: Light to moderate rainfall at most places with **heavy to very heavy rainfall** at a few places **is very likely** on 26th July.

Vidarbha: Light to moderate rainfall at most places with **heavy to very heavy rainfall** at a few places and **extremely heavy rainfall (≥ 21 cm)** is very likely at isolated places on 26th July and **heavy rainfall** at isolated places on 27th July.

Madhya Maharashtra: Light to moderate rainfall at most places with **heavy to very heavy rainfall** at isolated places **is very likely** during 26th – 28th July with **extremely heavy rainfall (≥ 21 cm)** on 26th July.

Gujarat region: Light to moderate rainfall at most places with **heavy to very heavy rainfall** at isolated places **is very likely** during 26th – 28th July with **extremely heavy rainfall (≥ 21 cm)** on 26th & 27th July.

East Rajasthan: Light to moderate rainfall at most places with **heavy to very heavy rainfall** at isolated places **is very likely** during 26th – 28th July with **extremely heavy rainfall (≥ 21 cm)** on 27th & 28th July.

West Rajasthan: Light to moderate rainfall at most places with **heavy to very heavy rainfall** at isolated places over north Chhattisgarh on 26th and **Heavy rainfall** at isolated places **is very likely** on 27th July.

Gangetic West Bengal: Light to moderate rainfall at most places with **heavy rainfall** at isolated places **is likely** on 26th July.

East Uttar Pradesh: Light to moderate rainfall at many places with **heavy rainfall** at isolated places **is very likely** on 26th July.

(ii) Wind Warning:

Squally wind speed reaching 30-40 kmph gusting to 50 kmph is likely to prevail over Jharkhand, Chhattisgarh, north Madhya Pradesh and adjoining southeast Uttar Pradesh during next 24 hours.

(ii) Impact Expected and Action Suggested due to heavy rainfall (Jharkhand, Chhattisgarh, Madhya Pradesh, Vidarbha, Madhya Maharashtra, Odisha & Gangetic West Bengal) and squally winds (Jharkhand, Chhattisgarh, north Madhya Pradesh & adjoining southeast Uttar Pradesh)

Impact expected:

- ❖ Breaking of tree branches, uprooting of small trees like banana, papaya, drum sticks. Strong wind and rain may damage plantation, horticulture and standing crops.
- ❖ Partial damage to vulnerable structures due to strong winds and rain.
- ❖ Minor damage to kutcha houses/walls, huts and roads due to heavy rain.
- ❖ Road and rail traffic may be affected due to heavy rain and squally winds.
- ❖ There could be localised landslides, mudslides, landslips, water logging, inundation and flooding over low lying areas.
- ❖ Occasional reduction in visibility due to heavy rainfall.
- ❖ Helicopter services may get affected.

Action suggested:

- ❖ People are advised to keep a watch on the weather for worsening conditions and be ready to move to safer places accordingly.
- ❖ Take safe shelters; do not take shelter under trees, as there could be lightning.

- ❖ In case of expected lightning, unplug electrical/ electronic appliances, immediately, get out of water bodies and keep away from all the objects that conduct electricity.
- ❖ Tourism and recreational activities to be regulated.
- ❖ Helicopter services to be regulated.

Significant rainfalls accumulated during past 24 hours recorded at 0830 hrs IST of today, the 26th July, 2025 are given in Annexure-I

Next bulletin will be issued at 2030 hours IST of today, the 26th July, 2025.

(Dr Ananda Kumar Das)
Scientist F, RSMC
IMD New Delhi

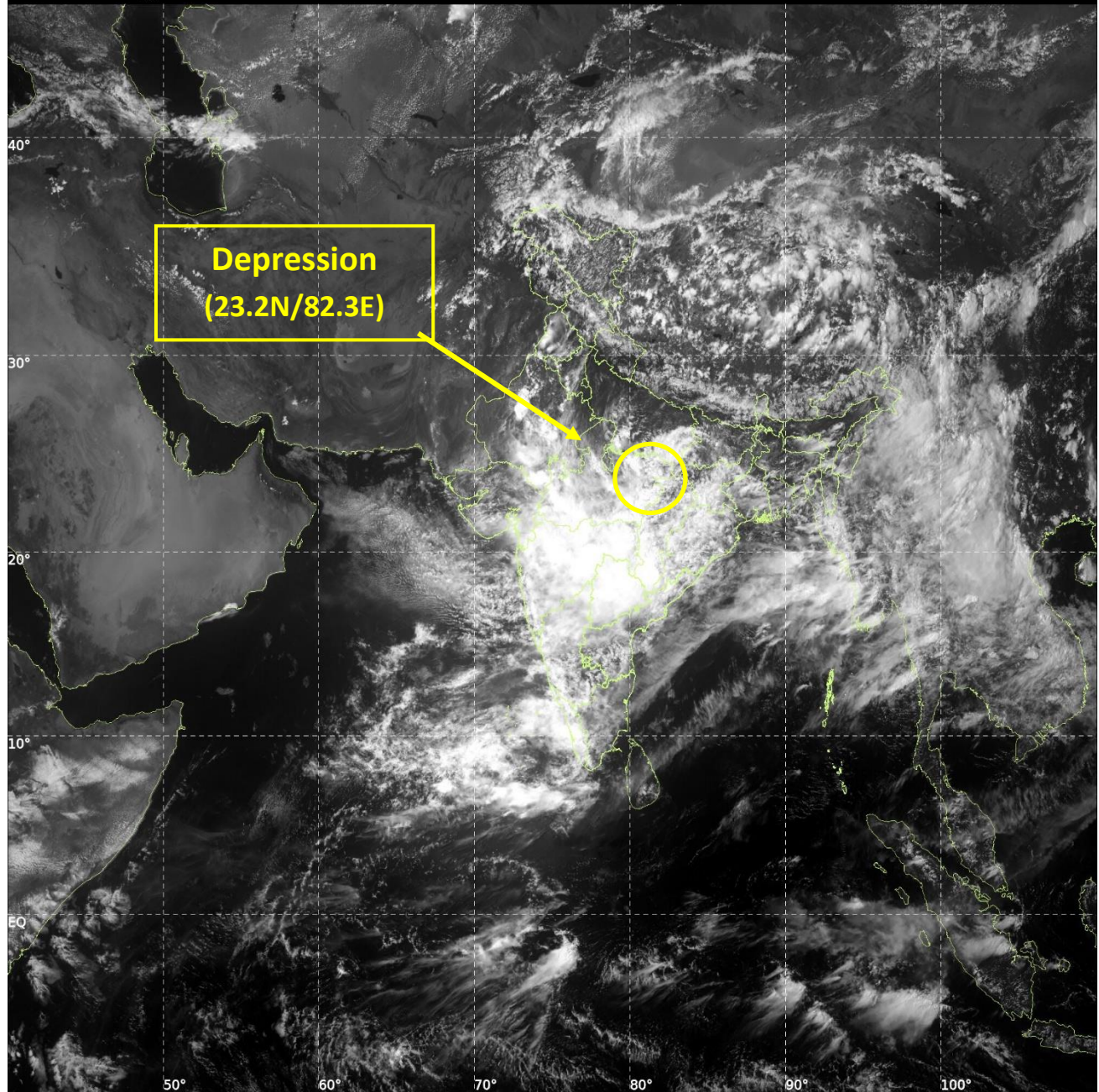
Copy to: ACWC Kolkata /CWC Bhubaneswar/CWC Vishakhapatnam/Meteorological Centres- Ranchi, Raipur, Patna, Bhopal, Lucknow, Jaipur, Mumbai, Nagpur



INSAT-3DS IMG, Visible Count @ 0.65 μm
GMT:26-07-2025/(0800-0827) IST:26-07-2025/(1330-1357)
L1C MERCATOR (LINEAR STRETCH: 0.5%)

70

443





OBSERVED AND FORECAST TRACK OF DEPRESSION OVER NORTH CHHATTISGARH AND ADJOINING EAST MADHYA PRADESH AT 1130 HRS. IST (0600 UTC) OF 26th JULY 2025

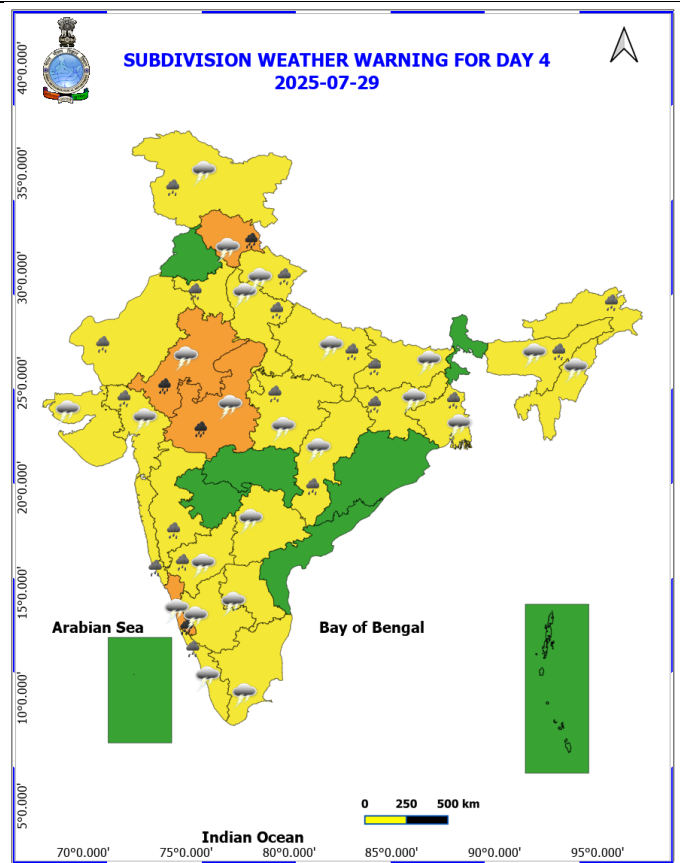
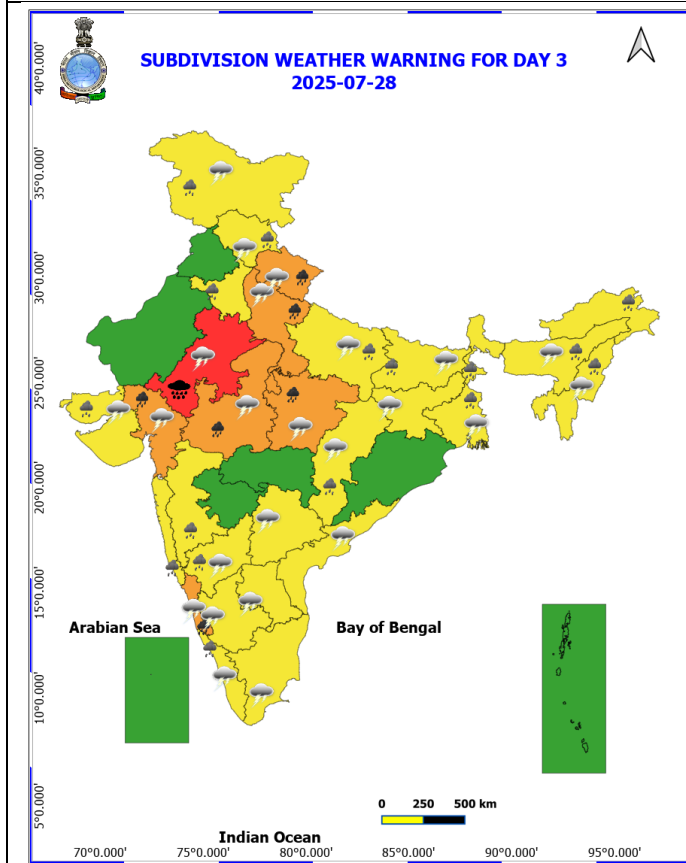
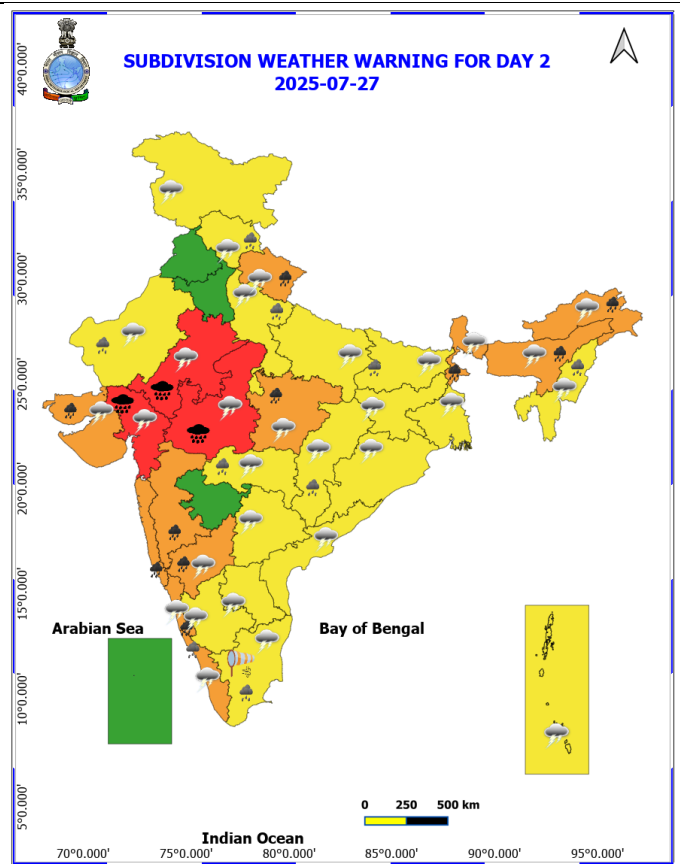
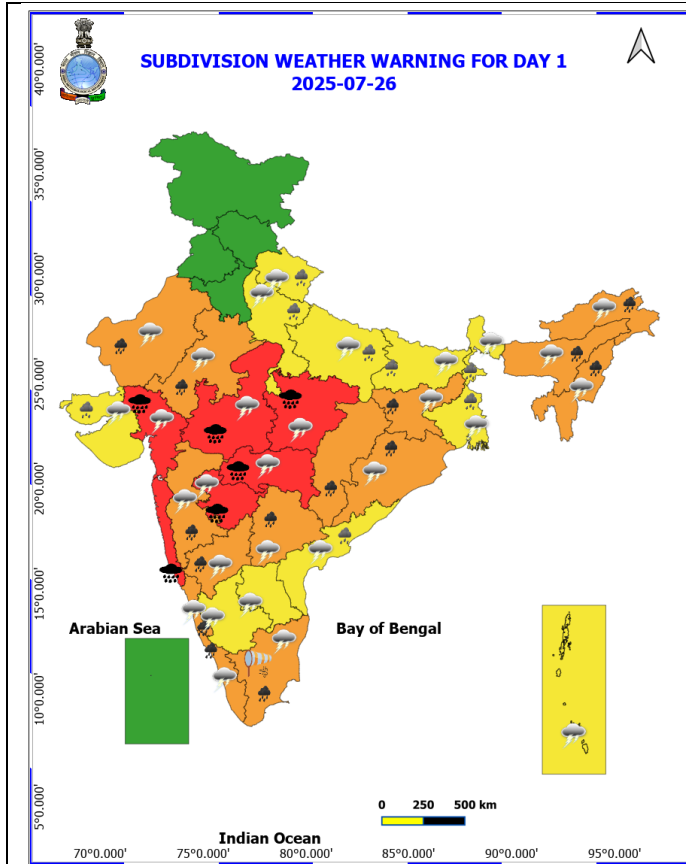


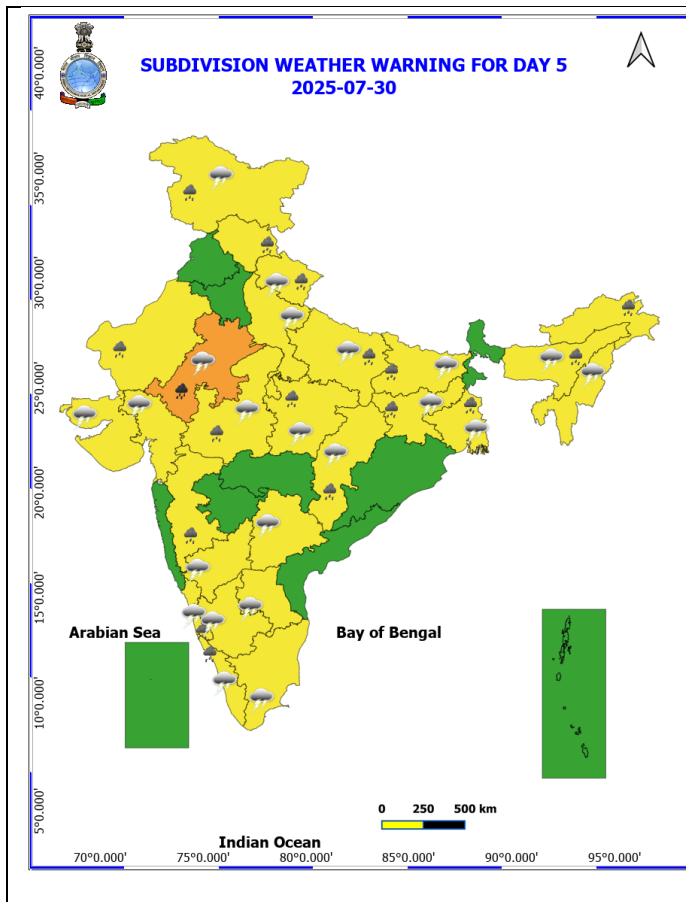
DATE/TIME IN UTC
 IST=UTC + 0530
 L: LOW PRESSURE AREA
 WML: WELL MARKED LOW PRESSURE AREA
 D: DEPRESSION (17-27 KT)
 DD: DEEP DEPRESSION (28-33 KT)
 CS: CYCLONIC STORM (34-47 KT)
 SCS: SEVERE CYCLONIC STORM (48-63KT)
 VSCS: VERY SEVERE CYCLONIC STORM (64-89 KT)
 ESCS: EXTREMELY SEVERE CYCLONIC STORM (90-119 KT)
 SuCS: SUPER CYCLONIC STORM (≥ 120 KT)


1KT=1.85 KMPH

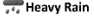
- LESS THAN 34 KT
- 34-47 KT
- ≥ 48 KT
- OBSERVED TRACK
- FORECAST TRACK
- ▲ CONE OF UNCERTAINTY


Weather Warnings Graphics







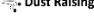
 Fog


 Heavy Rain

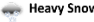
 Very Heavy Rain

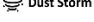
 Extremely Heavy Rain


 Thunder & Lightning


 Hailstorm


 Dust Raising Winds

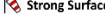
 Heavy Snow


 Dust Storm


 Heat Wave


 Warm Night

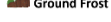
 Hot Day

 Hot & Humid

 Strong Surface Winds

 Cold Wave

 Cold Day

 Ground Frost

COLOUR CODED WARNING

No Warning (No Action)

Watch (Be Aware)

Alert (Be Prepared To Take Action)

Warning (Take Action)

Probabilistic Forecast

Terms	Probability of Occurrence (%)
Unlikely	< 25
Likely	25 - 50
Very Likely	50 - 75
Most Likely	> 75

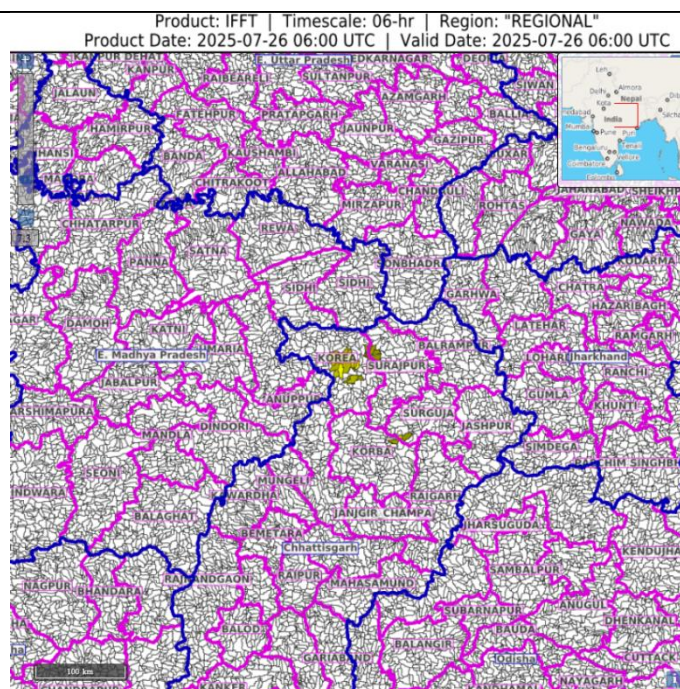
* Red colour warning does not mean "Red Alert", Red colour warning means "Take Action".
Forecast and Warning for any day is valid from 0630 hours IST of day till 0630 hours IST of next day.
For more details, kindly visit <https://mausam.india.gov.in> or contact: 011-2434-4599
(Service to the Nation since 1875)

Flash Flood Guidance

Observed Flash Flood Threat (IFFT) till 1130 IST of 26-07-2025 :

Low to Moderate flash flood threat observed over few watersheds & neighbourhoods of following Met Sub-divisions during last 6 hours.

Chhattisgarh – Korea, Surjapur and Surguja districts.



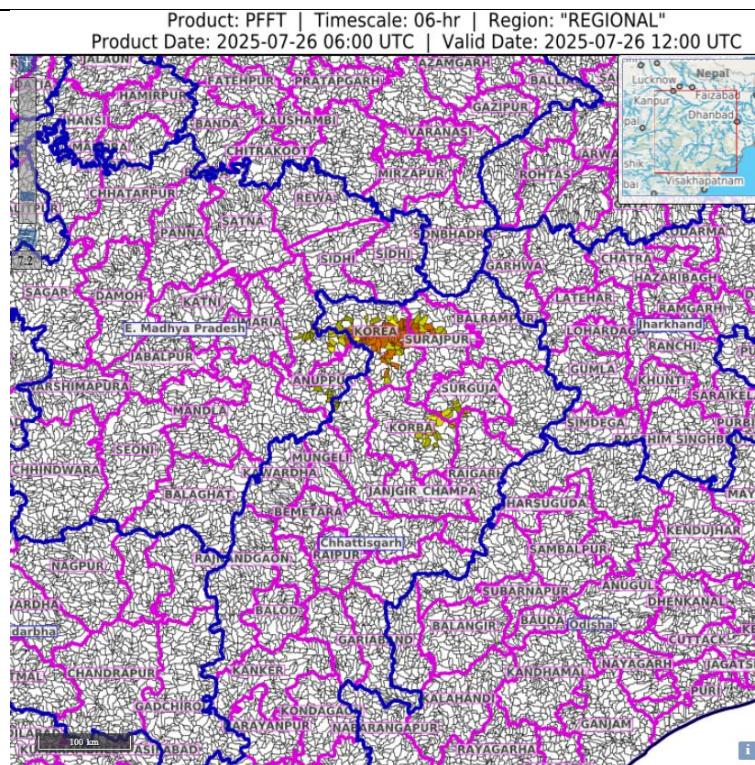
Persistent Flash Flood Threat (PFFT) till 1730 IST of 26-07-2025 :

Low to Moderate flash flood threat likely over few watersheds & neighbourhoods of following Met Sub-divisions during next 6 hours.

Chhattisgarh – Korba, Korea, Surjapur and Surguja districts.

East Madhya Pradesh – Annupur and Shahdol districts

Surface runoff/ Inundation may occur at some fully saturated soils & low-lying areas over Area of Concern (AoC) as shown in map due to expected rainfall occurrence in next 6 hours.



24 hours Outlook for the Flash Flood Risk (FFR) till 1130 IST of 27-07-2025 :

Moderate to High flash flood risk likely over few watersheds & neighbourhoods of following Met Sub-divisions during next 24 hours.

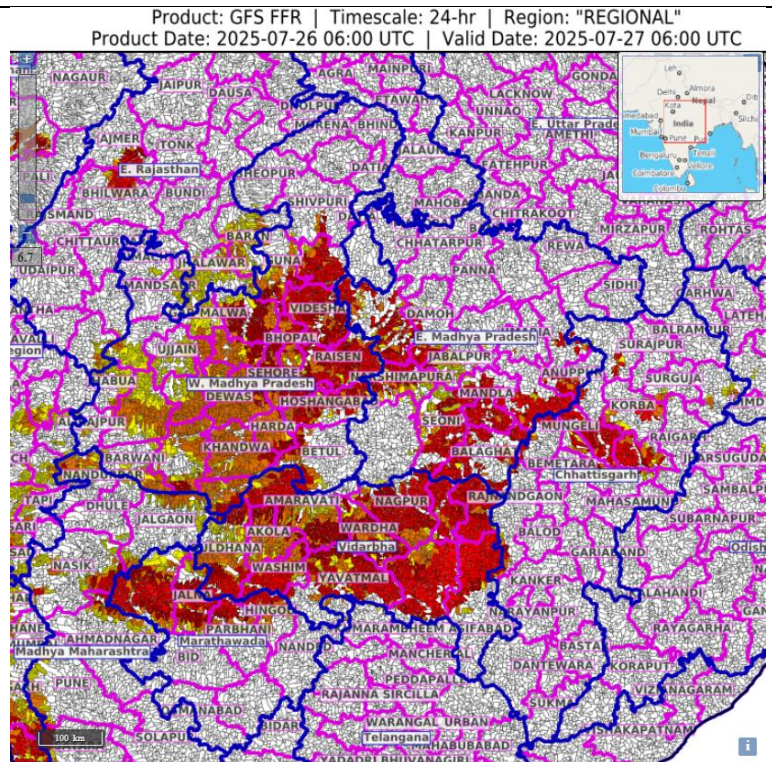
Chhattisgarh - Baloda Bazar, Bilaspur, Janjgir Champa, Kawardha, Korba, Korea, Mungeli, Rajnandgaon, Raipur, Surajpur and Surguja districts.

East Madhya Pradesh - Anuppur, Balaghat, Chhindwara, Damoh, Dindori, Jabalpur, Katni, Mandla, Narshimpura, Niwari, Sagar, Seoni, Shahdol, Singrauli, Tikamgarh and Umaria districts.

West Madhya Pradesh - Ashoknagar, Agar Malwa, Betul, Bharwani, Bhopal, Burhanpur, Dewas, Dhar, Guna, Harda, Indore, Jhabua, Kandwa, Khargone, Raisen, Rajgarh, Ratlam, Sehore, Shivpuri, Shajapur, Ujjain, Videsha and Hoshangabad districts.

Vidarbha - Amarawati, Akola, Bhandara, Chandrapur, Gadchiroli, Gondiya, Nagpur, Yavatmal, Washim and Wardha districts.

Surface runoff/ Inundation may occur at some fully saturated soils & low-lying areas over Area of Concern (AoC) as shown in map due to expected rainfall occurrence in next 24 hours.



Flash Flood Threat	Flash Flood Risk
 High Threat (Take Action)	 High Risk (Take Action)
 Moderate threat (Be Prepared)	 Moderate Risk (Be Prepared)
 Low Threat (Be Updated)	 Low Risk (Be Updated)

Annexure-I

Rainfall recorded (in cm) during past 24 hours till 0830 hours IST of today, the 26th July:

Madhya Maharashtra: Mahabaleshwar- Imd Obsy (Satara) 26, Lonavala_agri (Pune) 18, Radhanagari (Kolhapur) 15, Ozharkheda - Fmo (Nashik) 14, Harsul - Fmo (Nashik) 11, Shahuwadi (Kolhapur) 10, Igatpuri (Nashik) 10, Chandgad (Kolhapur) 8, Trimbakshwar (Nashik) 8, Girnadam - Fmo (Nashik) 7;

Chhattisgarh: Kusmi (Balrampur) 20, Samari (Balrampur) 14, Labhandih (Raipur) 13, Raipur (Raipur) 13, Dongargarh (Rajnandgaon) 13, Pratappur (Surajpur) 13, Balrampur (Balrampur) 12, Raipur City (Raipur) 12, Mukdega (Raigarh) 11, Odagi (Surajpur) 11, Mana-raipur-ap (Raipur) 10, Doura Kochali (Balrampur) 10, Ahiwara (Durg) 9, Pithora (Mahasamund) 9, Tongpaal (Sukma) 9, Chando (Balrampur) 9, Pondi Bachra (Koriya) 9, Bade Bacheli (Dantewada) 9, Kunkuri (Jashpur) 9, Baloda Bazar (Baloda Bazar) 9, Mandir Hasoud (Raipur) 8, Bhilai (Durg) 8, Arang (Raipur) 8, Belargaon (Dhamtari) 7, Shankargarh (Balrampur) 7, Ramanujnagar (Surajpur) 7, Bilha (Bilaspur) 7, Marwahi (Gaurela Pendra Marwahi) 7, Bhaiyathan (Surajpur) 7, Mahasamund (Mahasamund) 7, Charama (Kanker) 7, Raigarh (Raigarh) 7, Ratanpur (Bilaspur) 7, Rajnandgaon (Rajnandgaon) 7;

Jharkhand: Ghatsila (East Singbhum), Manjhari (West Singbhum) 19 Each; Kuru (Lohardaga), Majhgaon (West Singbhum), Tantanagar (West Singbhum), Hatgamharia (West Singbhum) 12 Each; Mandar (Ranchi) 11; Chaibasa (West Singbhum), Chandil (Seraikela-kharsawan), Arki (Khunti), Goikera (West Singbhum), Musabani (East Singbhum), Saryu (Latehar), Sisai (Gumla) 10 Each; Latehar Balumat Kvk AWS (Latehar), Gudri (West Singbhum), Sonua (West Singbhum), Kumardungi (West Singbhum), Garu (Latehar) 9 Each; Jamshedpur (East Singbhum), Diyakel Khunti Kvk AWS (Khunti) 8 Each; Latehar (Latehar), Kolebira (Simdega), Jamshedpur AP (East Singbhum), Kharsema (Seraikela-kharsawan), Simdega (Simdega), Gumla (Gumla), Anandpur (West Singbhum), Dhalbhumgarh (East Singbhum), Gurabandha (East Singbhum), Bharno (Gumla) 7 Each;

Odisha: Muruda (Mayurbhanj) 18, Bahalda (Mayurbhanj) 17, Baripada (Mayurbhanj) 16, Jamda (Mayurbhanj) 16, Suliapada (Mayurbhanj) 14, Kusumi (Mayurbhanj) 13, Tensa (Sundargarh) 13, Gudvela (Bolangir) 13, Tiring (Mayurbhanj) 12, Raruana (Mayurbhanj) 12, Kaptipada (Mayurbhanj) 12, Sukruli (Mayurbhanj) 11, Rasagovindapur (Mayurbhanj) 10, Jharbandh (Bargarh) 10, Rairangpur (Mayurbhanj) 10, Samakhunta (Mayurbhanj) 10, Champua (Keonjhar) 10, Saintala (Bolangir) 9, Karanjia (Mayurbhanj) 9, Joda (Keonjhar) 9, Bijatala (Mayurbhanj) 9, Balimundali (Mayurbhanj) 9, Betanati (Mayurbhanj) 9, Paikmal (Bargarh) 8, Swam-patna (Keonjhar) 8, Balisankara (Sundargarh) 7, Jhumpura (Keonjhar) 7, Nawana (Mayurbhanj) 7, Chandua Kuliana (Mayurbhanj) 7, Kantamal (Boudhgarh) 7, Laikera (Jharsuguda) 7, Sharpada (Keonjhar) 7;

East Madhya Pradesh: Bajag (Dindori) 18, Gadarwara (Narsinghpur) 14, Mawai (Mandla) 14, Sidhi (gopadbanas) (Sidhi) 13, Singrauli-aws (Singrauli) 12, Kotma (Anuppur) 11, Baldevgarh (Tikamgarh) 11, Lanji (Balaghat) 11, Pushprajgarh (Anuppur) 11, Lalburra (Balaghat) 9, Rithi (Katni) 9, Jaitpur (Shahdol) 9, Mehadwani (Dindori) 8, Venkatnagar (Anuppur) 8, Khargapur (Tikamgarh) 8, Harrai (Chindwara) 8, Orchha (Niwari) 7, Mohgaon (Mandla) 7, Sarai (Singrauli) 7;

Gujarat Region: Kaprada (Valsad) 17, Silvassa (Dadara & Nagar Haveli) 15, Vapi (Valsad) 13, Madhbun (Dadara & Nagar Haveli) 11, Khanvel (Dadara & Nagar Haveli) 9, Nanipalson (Valsad) 8, Daman_aws (Daman) 8;

East Rajasthan: Dausa (Dausa) 16, Bayana (Bharatpur) 10, Chothkabarwara Sr (Sawai Madhopur) 8, Sarmathura Sr (Dholpur) 8, Anta Sr (Baran) 7, Udaipur-wati (Jhunjhunu) 7, Bassi (Jaipur) 7;

West Madhya Pradesh: Udaipura (Raisen) 16, Biaora (Rajgarh) 14, Badi (Raisen) 14, Pipariya (Narmadapuram) 11, Sohagpur (Narmadapuram) 10, Satwas (Dewas) 9, Panchmarhi

(Narmadapuram) 9, Kumbhraj (Guna) 9, Mehgaon (Bhind) 9, Bareli (Raisen) 9, Goharganj (Raisen) 9, Bairad (Shivpuri) 9, Gwalior (Gwalior) 8, Sultanpur (Raisen) 8, Chachoda (Guna) 8, Narwar (Shivpuri) 7, Budhni (Sehore) 7;

Vidarbha: Armori (Gadchiroli) 9, Gadchiroli (Gadchiroli) 9, Desaiganj (Gadchiroli) 9, Salekasa (Gondia) 8, Gondia Ap (Gondia) 8, Dhanora (Gadchiroli) 8, Gondia (Gondia) 8, Amgaon (Gondia) 7, Kurkheda (Gadchiroli) 7, Nagbhir (Chandrapur) 7, Saoli (Chandrapur) 7, Chikhalda (Amraoti) 7;

Gangetic West Bengal: Midnapore (West Midnapore) 9, Mohanpur (West Midnapore) 9, Midnapore(cwc) (West Midnapore) 9, Amta (Howrah) 7, Dum Dum (North 24 Parganas) 7, Canning (South 24 Parganas) 7, Uluberia (Howrah) 7;